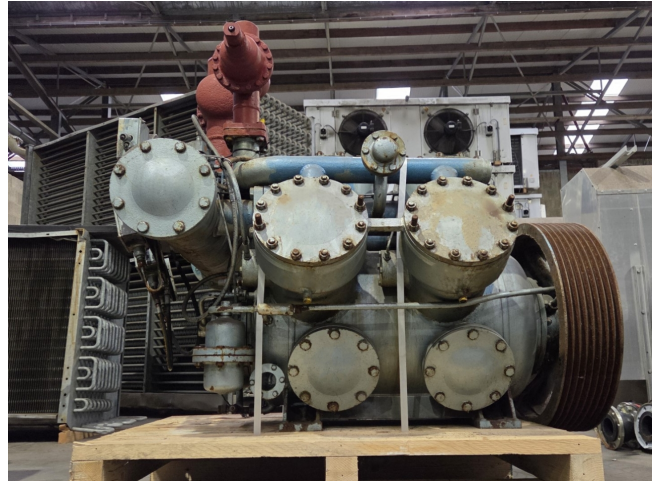


# Grasso RC 611

## Specifications

Brand	Grasso
Type	RC 611
Refrigerant	Freon
kW at 0°C/+40°C	588,4
kW at -5°C/+40°C	482,8
kW at -10°C/+40°C	391,1
kW at -20°C/+40°C	243,1
kW at -30°C/+40°C	134,7
Pressure safety switches	✓
Hp/Lp/Op	
Pressure gauges	✓
Hp/Lp/Op	
Sight Glass	✓
m <sup>3</sup> / h	798
Sizes	1600x1300x1450 mm (LxWxH)
Stock	1



## Description

### Used Grasso RC 611

Used Grasso RC 611 reciprocating compressor on Freon. Complete with pressure and safety switches/gauges and a sight glass. The compressor has a displacement of 798 m<sup>3</sup>/h at 1000 RPM.

\*Why choose for HOSBV? We're not only the largest used refrigeration specialist in Europe, but also, we deliver all equipment including an extensive test, warranty and industrial cleaning.

\*Optional we can also perform a new paint job and arrange the logistics.

